



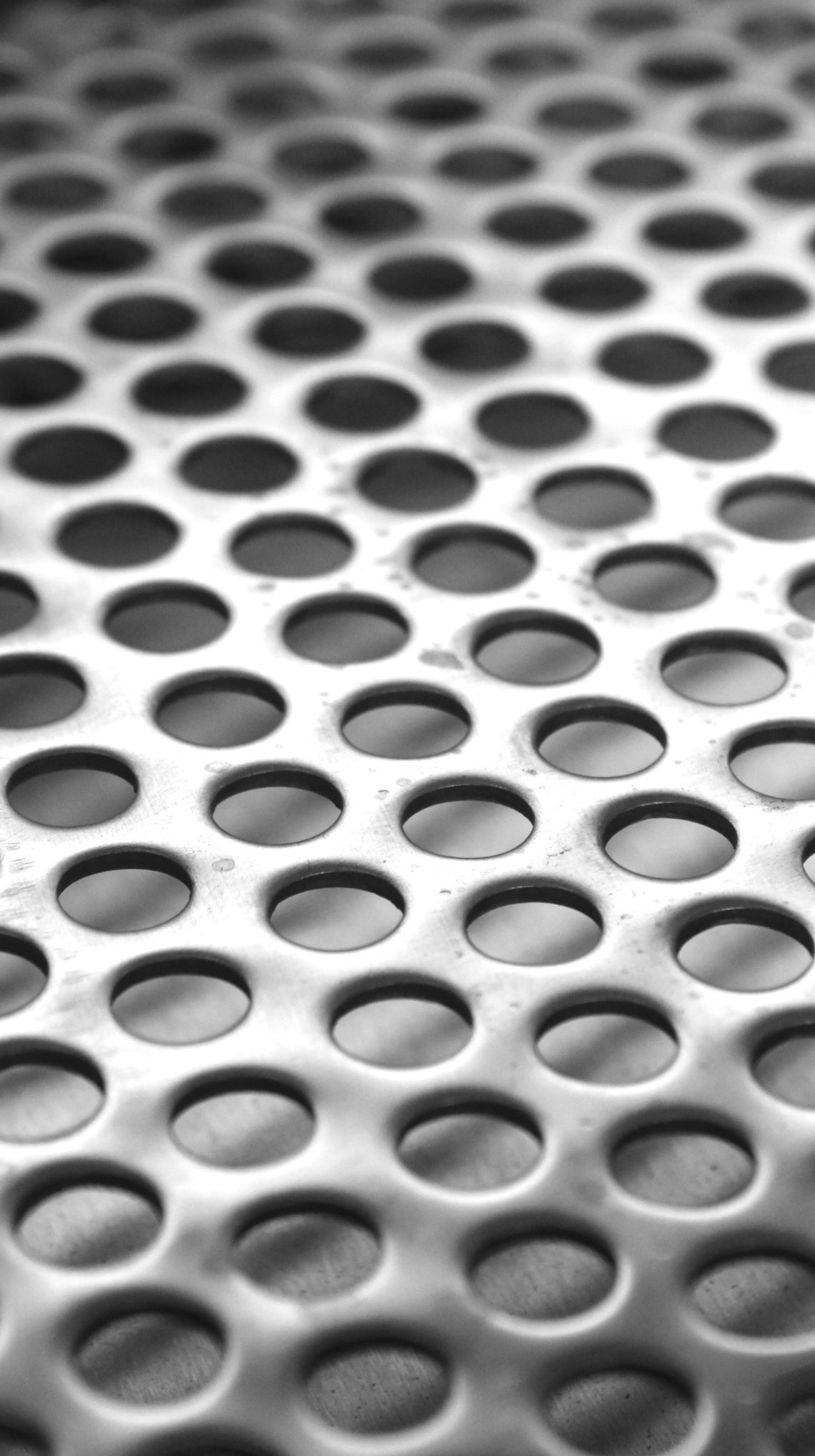
**PRISMA**  
STAINLESS STEEL MANUFACTURE

PT PRIMA SARANA MAKMUR

---

# CORPORATE PROFILE





**ENGINEERING  
PERFECTION.  
ENGINEERING  
GROWTH.  
ENGINEERING  
FUTURE.**



**WE ARE WIDELY KNOWN AS A STEEL MANUFACTURER SINCE 2006. HAVING DELIVERED VARIOUS RANGES OF PRODUCTS AND SERVICES, WE ARE TRUSTED BY OUR QUALITY AND REPUTATION IN DELIVERING WHAT IS TRULY NEEDED...BEYOND EXPECTATION.**

**WE WORK FOR GREATER PURPOSES,  
AND WE AIM FOR GREATER IMPACTS,  
SO WE CAN ACHIEVE GREATER RESULTS.**

**WE ARE BUILDING A SUSTAINABLE GROWTH.  
WE WANT TO BE A PART OF YOURS, TOO.**



**TO BECOME THE MOST TRUSTED STEEL MANUFACTURE  
COMPANY BY DOING CONSISTENT BUSINESS,  
DELIVERING HIGH-QUALITY PRODUCTS AND  
PROFESSIONAL SERVICES.**

**OUR VISION**



**SYNERGISING WORK SYSTEMS.  
BUILDING MUTUAL PARTNERSHIPS.  
EMPOWERING HUMAN RESOURCES.  
CREATING PRODUCT INNOVATIONS.  
LEVERAGING TECHNOLOGIES.**

**OUR MISSION**





INCREASING

---

PRODUCTIVITY





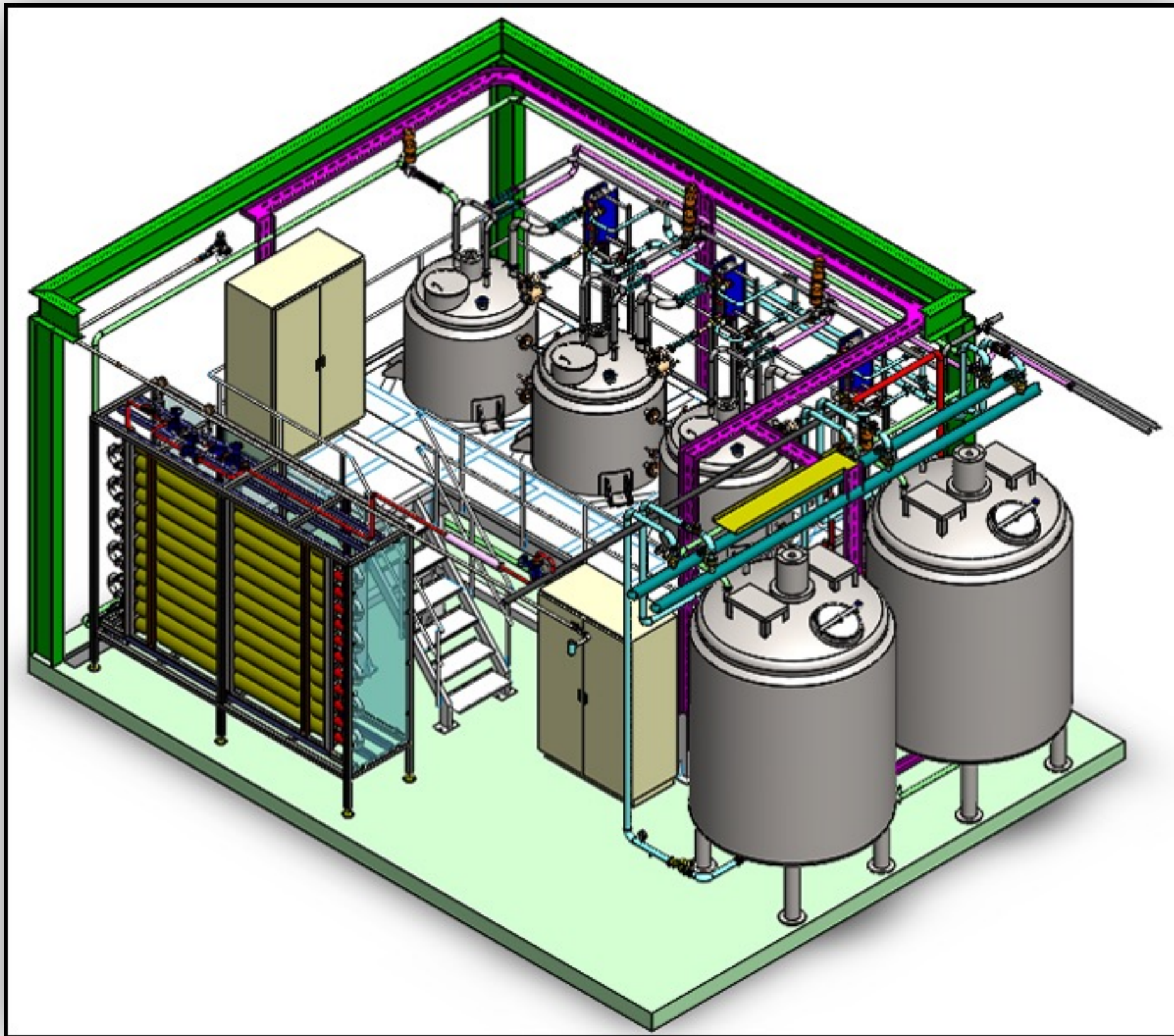
**AUTOMATIC TINTING SYSTEM**





# AUTOMATIC TINTING SYSTEM





# AUTOMATIC COOKING SYSTEM





**AUTOMATIC COOKING SYSTEM**





**EXTRACTION PROCESS**





**MAYONNAISE PRODUCTION LINE**





**MAYONNAISE PRODUCTION LINE**

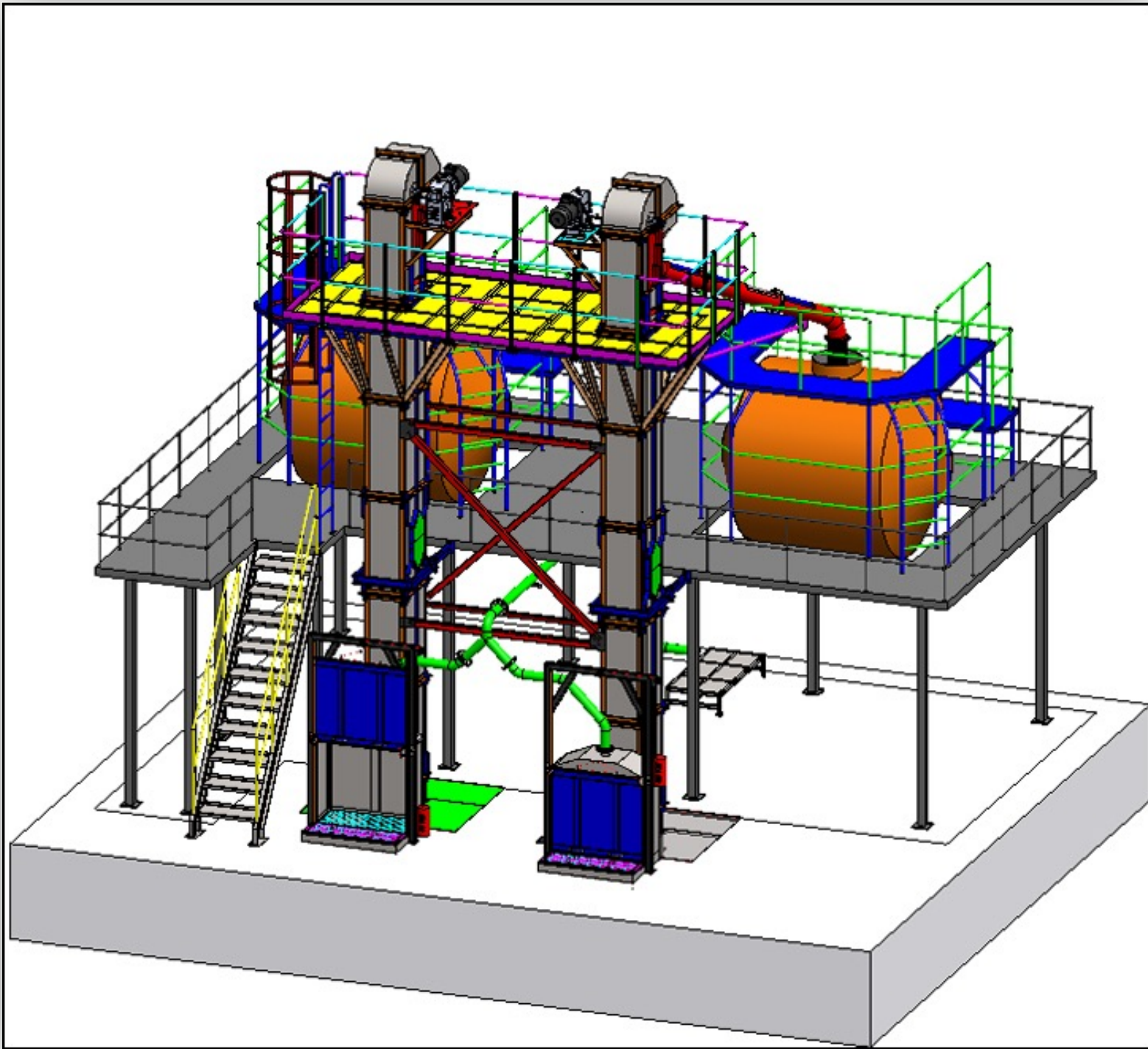


INTENSIFYING

---

**EFFICIENCY**





# MATERIAL TRANSFER SYSTEM





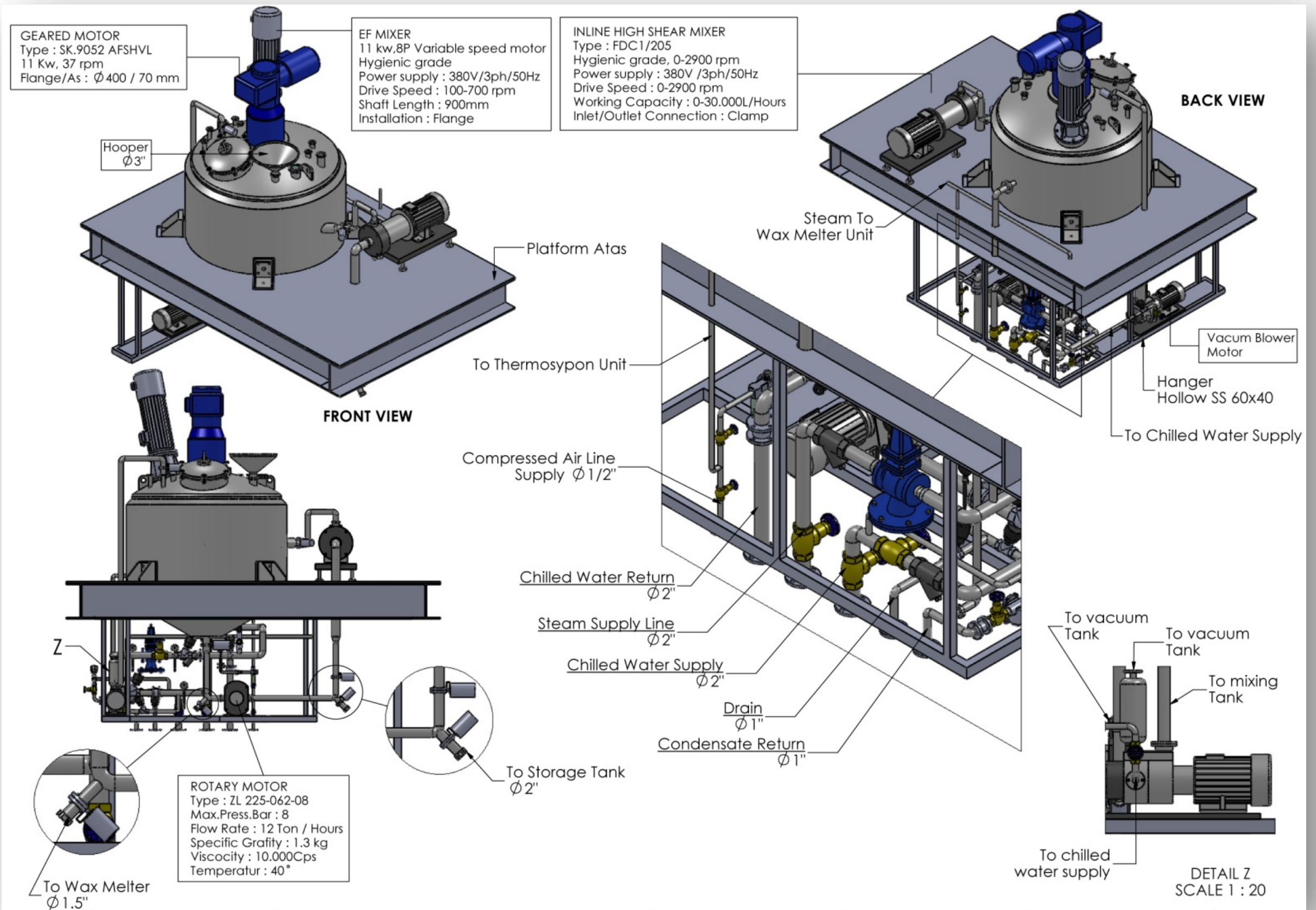
**RESIN PRODUCTION LINE**





**RESIN PRODUCTION LINE**





# SCRUB PRODUCTION LINE





**SCRUB PRODUCTION LINE**





**COSMETICS PRODUCTION LINE**





**FOOD EXTRACTION PRODUCTION LINE**





IMPROVING

---

QUALITY





PASTE PRODUCTION LINE





**FLAVOUR PRODUCTION LINE**





**FLAVOUR PRODUCTION LINE**





**CHOCOLATE PRODUCTION LINE**





**CHOCOLATE PRODUCTION LINE**





**CHOCOLATE PRODUCTION LINE**





**CHOCOLATE PRODUCTION LINE**





14.08.2015 10:39

**RARE EARTH (MONASIT) EXTRACTION PROCESS**





**RARE EARTH (MONASIT) EXTRACTION PROCESS**



# THEY TRUST US.



# SO WHY WON'T YOU?





WE WANT TO KNOW  
YOU.

---

**WE WANT TO  
SUPPORT YOU.**



**WE WANT TO  
GROW WITH YOU.**